

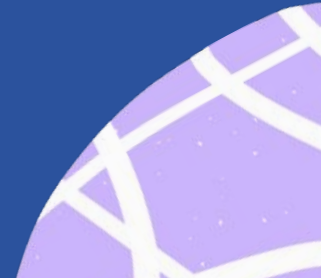


Dual Enrollment Informational Session



KCAPA

January 2025





**Dual Enrollment
means being a**

KCAPA student

and a

College student

at the same time

Benefits of Dual Enrollment

Some Options

Music Production

Fashion Design

Music

Cooking

Nursing

EARN COLLEGE
CREDITS

FREE COLLEGE
COURSES

TAKE CLASSES YOU
LIKE

EXPLORE THE
COLLEGE LIFE

FREE MATERIALS
AND BOOKS

LEAVE SCHOOL
EARLY (SENIORS)

GET A HEADSTART ON COLLEGE



Student day...

Juniors

Attend your normal classes at KCAPA and take 1 college class per semester

Seniors

Attend normal classes at KCAPA and leave about 9:30am to go to college

More Information



Ms. Guerrier, KCAPA Counselor

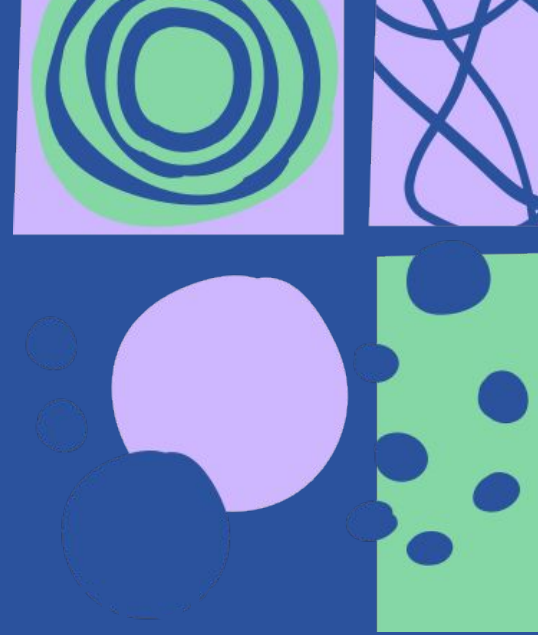
- mguerrier@philasd.org

Ms. K. Smith, KCAPA Director of Academic Affairs

- kathesmith@philasd.org

[Act Fast – registration opens soon](#)

Partnering Colleges and Universities





Esperanza College
of EASTERN UNIVERSITY

Dual Enrollment Presentation Fall 2025



A Branch Campus of
Eastern University

Affordable. Flexible. Relevant.



Why Esperanza College?

1

Hispanic Serving Institution (HSI)

- We are an **Hispanic Serving Institution** (HSI) in the Commonwealth of Pennsylvania
- ECEU was created with **“YOU IN MIND”** by design with culturally sensitive programs

3

Esperanza Grant

- Our Esperanza Grant uniquely reduces Eastern University’s tuition by **50% for full time students.**

2

High Graduation Rate

- Esperanza College historically has a graduation rate of **nearly 60%**, over 3 times higher than the national average for comparable 2-year community colleges

4

Opportunity Community

- ECEU is one of a family of **organizations** including: K-12 educational academies, housing counseling, neighborhood revitalization, immigration legal services, Teatro Esperanza, and CareerLink all designed to create a transformative moment for those we are serving!

UP TO
50%
TUITION
COVERED!

ESPERANZA FOR YOU!

TRANSFORMING “EL BARRIO” INTO AN OPPORTUNITY COMMUNITY!





STATE OF THE ART FACILITIES



Liberty Library



TV Studio



Esports Lab



M-Tech Labs



STEM Wing



Science Labs

Fall 2025 Dual Enrollment Program

Application Process

- Fall 2025 application deadline - **July 25th**
- Complete a FERPA form - [Click Here](#)

Dual Enrollment Requirements

- Student must be in 11th or 12th grade
- High School Transcript / 3.0 GPA Required
- Guidance Counselor Referral Letter
- Parental or Guardian Consent

Registration Timeline

- Registration Open Date is **Mid-April 2025**
- Registration deadline is **July 31st**
- **Fall 2025** Course Offerings (*Available Mid-April 2025*)
- Courses are offered **on-campus & online**

Spring 2025 Semester Dates & Times

- August 4-7, 2025 New Student Orientation
- August 11, 2025 First day of classes
- August 22, 2025 Last day to add/drop
- October 10, 2026 Mid-Semester Warning
- October 17, 2025 Last day to withdraw without academic penalty
- December 1-11, 2025 Finals Week



Esperanza College
of EASTERN UNIVERSITY

Department of Admissions

4261 North 5th Street
Philadelphia, PA 19140
T: 215-324-0746 Ext. 410
E: ecinfo@eastern.edu

Scan to learn more...



Campus Resources

NO ADDITIONAL COST TO STUDENTS

Tutoring 24/7

Students have access to online tutoring 24/7 for free. Login to Brightspace

Esperanza Tutors

Students have access to tutoring services by appointment with our professional tutors at no additional cost.

UWill

Free immediate access to teletherapy and mental health crisis support for students.

Online Databases

Stephenson Family Library provides access to scholarly articles, journals, books, and other academic materials.





Esperanza College
of EASTERN UNIVERSITY

MEET THE TEAM



Albert Brown

Head of Admissions and Marketing
abrown@esperanza.us
albert.brown@eastern.edu
P: (215) 324-0746 Ext. 437



Dr. Nilsa Graciani

Director of STEM and Medical Assisting
ngracian@eastern.edu
P: 215-324-0746 Ext. 466



Sully Mori

Student Success Coordinator
smori@esperanza.us
sully.mori@eastern.edu
P: 215-324-0746 Ext. 415

DUAL ENROLLMENT TEAM
ecinfo@eastern.edu

Dual Enrollment Pathways

At

La Salle University



***COMMUNITY SCHOLARS
EXPLORE THE POSSIBILITIES***



Known For Dual Enrollment: Community Scholars

Student Eligibility

- Juniors & seniors
- Minimum GPA 3.00
- Motivated, responsible, and ready to learn new things

Dual Enrollment Team

- Keep students informed
- Monitor student progress
- Offer support, strategies and resources



The Campus Experience

- **New Student Orientation: late August**
- **Fall Term: late August to December**
 - In-person classes, on La Salle's campus
 - Taught by La Salle faculty along with college students
 - Close to bus stop and subway!
- **Free Tuition, Textbooks, Transport**
(funded by the School District of Phila)



Explore, Engage, Earn

Classes run 3Xs a week/50 minutes or 2Xs a week/75 minutes

Sample listing of courses:

Arts & Sciences	Business	Health Sciences
Presentation Skills	Organizational Behavior	Essentials of Public Health
Introduction to Black Studies	Ethics and the Good Life	Psychopathology
Intro to Creative Writing	Financial Accounting	Dynamics of Human Development & Diversity
Criminology	International Relations	Developmental Psychology
Media and Society	Intercultural Communication	Nutrition
Human Development & Diversity	Computer Applications for Business	Moral Quandaries in Health Care

WHAT'S NEXT?

- **Talk to your high school counselor**
- **Limited spots available**
 - **Fall 2025 Application opens March**
 - **Application deadline – May 15**
- **Questions?**

dualenrollment@lasalle.edu

Program Enrollment and School Partnerships





Dual Enrollment Information

Summer 2025

Eligibility

- Rising 11th and 12th graders (Class of 2026 & 2027)
- 2.8 GPA

MAT 131: Pre Calculus

West Chester University

Course Description:

Topics include polynomial, rational, exponential, logarithmic, and trigonometric functions. An emphasis is placed on understanding function properties and graphs without the use of technology.



Pre Calculus

at West Chester University

Priority Deadline: March 31st

- Earn 3 college credits with West Chester, practice your math skills, and learn how these skills can apply to the STEM field!
- **Course Details:**
 - Term dates : June 30th- August 3rd
 - Class Day/Time : Mondays, Wednesdays, Fridays
 - Class 10AM-12PM
 - Lunch (provided) : 12PM-1PM
 - Study Hall: 1PM-3PM
 - Location: [West Chester University, Philadelphia Center \(8th/Market\)](#)
- Next steps: Sign up to attend general info session!



Eligibility

- Rising 11th and 12th graders (Class of 2026 & 2027)
- 2.8 GPA

HRM 1101: Leadership and Organizational Management

Temple University

Course Description:

This course prepares students to address the challenges of leading high performing organizations. Course topics include leadership, change management, decision-making, culture, team building, organizational structure and control, communication, social responsibility and sustainability, motivation, human resource management, and globalization



Leadership and Organizational Management at Temple University

Priority Deadline: March 31st

- Earn 3 college credits with the Fox School of Business and learn about how to apply these skills to the business field!
- **Course Details:**
 - Term dates : June 30th- August 8th
 - Class Day/Time : TBD
 - Location: Temple University, Alter Hall
- Next steps:
 - Sign up to attend general info session!



Eligibility

- Rising 11th and 12th graders (Class of 2026 & 2027)
- 2.8 GPA

FIN 0822: Investing for the Future (Financial Literacy)

Temple University

Course Description:

This class will teach you about seemingly complicated financial topics (stocks, retirement, big purchases, etc.) in a very comprehensible manner that will help you make informed financial decisions to ensure a secure financial future.



Investing for the Future

at Temple University

Priority Deadline: March 31st

- Earn 3 college credits with the Fox School of Business and learn about how to apply these skills to the business field!
- **Course Details:**
 - Term dates : June 30th- August 8th
 - Class Day/Time : TBD
 - Location: Temple University, Alter Hall
- Next steps:
 - Sign up to attend general info session!





Wharton Global Youth Pre-Baccalaureate Program

University of Pennsylvania

Eligibility

- Rising 11th and 12th graders (Class of 2026 & 2027)
- 3.5 GPA
- Strong Essay



Wharton Global Youth Pre-Baccalaureate Program

at University of Pennsylvania

- Summer Session 1: March 26
- Summer Session 2: April 30
- **Course Details:**
 - Different Business Classes each Term
 - Examples: Business, Health Economics, Statistics, Data Science, etc
 - Summer Session 1: May 26- July 2
 - Summer Session 2: July 3- August 8th
 - Virtual



Wharton Global Youth Pre-Baccalaureate Program

Next Steps: at University of Pennsylvania

- Attending a general info session
- Application Entails:
 - Transcript, reference, and 3 essay questions
 - Reference doesn't need to be written when applying, you will enter contact info and Wharton will contact them from there

**DO NOT PAY THE
FEE ON THE
APPLICATION!!**

We can get your fee waived if you
apply with Heights!





Eligibility

- Rising 11th and 12th graders (Class of 2026 & 2027)

Temple Summer Academy

Temple University

4 week Summer College Experience with residential option

- Includes 4 week 3 credit dual enrollment course and 2 two-week non credit workshops
- Not free, but scholarships available if you apply by priority deadline



Temple Summer Academy at Temple University

Application Requires:

- Transcript of all grades since 9th
- 500 word personal statement
- Recommendation from teacher/counselor
- Test scores from PSAT/SAT/ACT OR academic paper you wrote this year

Priority deadline: Feb 14th

Next steps: Sign up to attend general info session!



Interested?

Start here- sign up for an info session to get more details!





Application and Enrollment Process

Applying to your program and enrolling in the college.

Information Session

- Explore options
- DE Benefits
- Assess Details
- Deadlines

DE Interest Form

- Choose program
- Upload HS transcript
- Finish general forms
- RSVP to application workshop

Application Workshop

- Heights support with application
- Essays
- Fee Waiver
- General Forms

Accepted Students Meeting

- Selected students complete their enrollment
- FERPA
- Test portal logins

Program Orientation

- Learn about college services
- Finish anything needed for class
- Textbooks
- Technology

Selection Process

[Individual Student Consultation](#) with Ms. Annie-Rose
adevaney@heights.org and 609-937-6201 (cell)





Temple Education Scholars

2025-2026

Program Overview



About Us

—
Temple Education Scholars (TES) is a **year-long** Dual Enrollment Program, designed for **college-bound** high school **seniors** to take up to a **full semester's (15 credits)** worth of **education** courses at Temple University in a **supportive** environment.



A photograph of a Gothic-style brick building with a large flag flying in front of it. The flag features a stylized 'TU' logo. The image is overlaid with a semi-transparent dark red filter. A white text box is positioned on the right side of the image.

TEMPLE EDUCATION SCHOLARS

+ Year long dual enrollment program for 12th grade students

+ Promotes college access and success

+ Provides opportunity for young people to enter professions in education

Temple Education Scholars

- Year-long program
- Mornings at High School
- Afternoons at Temple (M-F 1:30-5pm)
- College & career pathway for those *interested in education*
- **5 college education courses = 15 college credits = 1 full semester of classes at NO COST to students or families**



— Applicant Criteria

- Current 11th grade student
- Unweighted GPA of 3.0 or better
- **Interest in education majors and careers**
- Interest in attending college
- Submission of the TES 2025-2026 Application





Expectations of TES Scholars

- Commitment + Attendance
- Communication /
Responsiveness + Collegiality
- Positive Outlook & Attitude
- Willingness to Learn, Receive
and Offer Feedback, Ask for
Help, and Work Hard
- Professional and Ethical
Behavior

TES Courses

- + EDAD 0855: **Higher Education in American Life: *Why Care About College?***
 - + EDUC 2103: **Socio-Cultural Foundations of Education in the U.S.**
 - + ECED 2101:
Child Development (birth to age 9)
 - + EDUC 0809/EDUC 0823:
Reading Between the Lines: Race and Diversity or Kids In Crisis
 - + SPED 2231: **Introduction to Inclusive Education**
-



Timeline to Apply

- Apply to the TES supplemental application as early as **today**
- SDP's Senior Year Only Program (SYOP) application opens **February 24th**
 - Application closes **April 4th**
 - Students can expect a response regarding their decision by **April 24th**
- Students **MUST** apply to both the SYOP application **and** the TES specific supplemental application to be considered for the program
 - A reminder will be sent for the SYOP application once it opens



**Scan HERE to
apply for the TES
supplemental
application!**

Questions?

Please reach out to

+General TES Email
tes1@temple.edu

+ Ms. Jody Markley:
jody.markley@temple.edu

+ Ms. Rachel Gerberick:
rachel.gerberick@temple.edu





Dual Enrollment

- **Fall Semester:** Aug. – Dec.
- **Application Start Date:** April 2025
- **Application Deadline:** May 2025
- **Eligibility Requirements:** 11th and 12th graders with a minimum GPA of 3.0.
- **Tuition & Books:** FREE



Dual Enrollment

- **Some Course Offerings**
 - **International Studies**
 - **Psychology**
 - **Video Production**
 - **Public Health**
 - **Website Development**



Harrisburg University

Dual Enrollment Acceptance Guidelines

- ✓ High school junior or senior
- ✓ An overall minimum grade point average of 2.5

Harrisburg University of Science and Technology Dual Enrollment for 2024 Summer/Fall Semester

1500 Spring Garden Street, Philadelphia, PA 19130



✓ **Registration for Summer & Fall
Application open April**

✓ **SUMMER CLASS DATES– JULY – AUGUST**

✓ **FALL CLASS DATES -AUGUST – OCTOBER**



Harrisburg University

Student Support

- Mental Health Counseling
- Free Tutoring (Faculty & Peer)
- Career Services & Experiential Learning
- Accommodations Support
- Housing & Residence Life
- Library Resources
 - 24/7 Chat Library Support
 - Multiple Courses w/Free or Included Textbooks
 - Thousands of Dollars in Textbook Cost Savings Each Year
- Student Success
 - Acclimation & Navigation of HU
 - Academic Advising & Schedule Building
 - Time Management & Study Skills



More Information



Ms. Guerrier, KCAPA Counselor

- mguerrier@philasd.org

Ms. K. Smith, KCAPA Director of Academic Affairs

- kathesmith@philasd.org

Act Fast – registration opens soon